

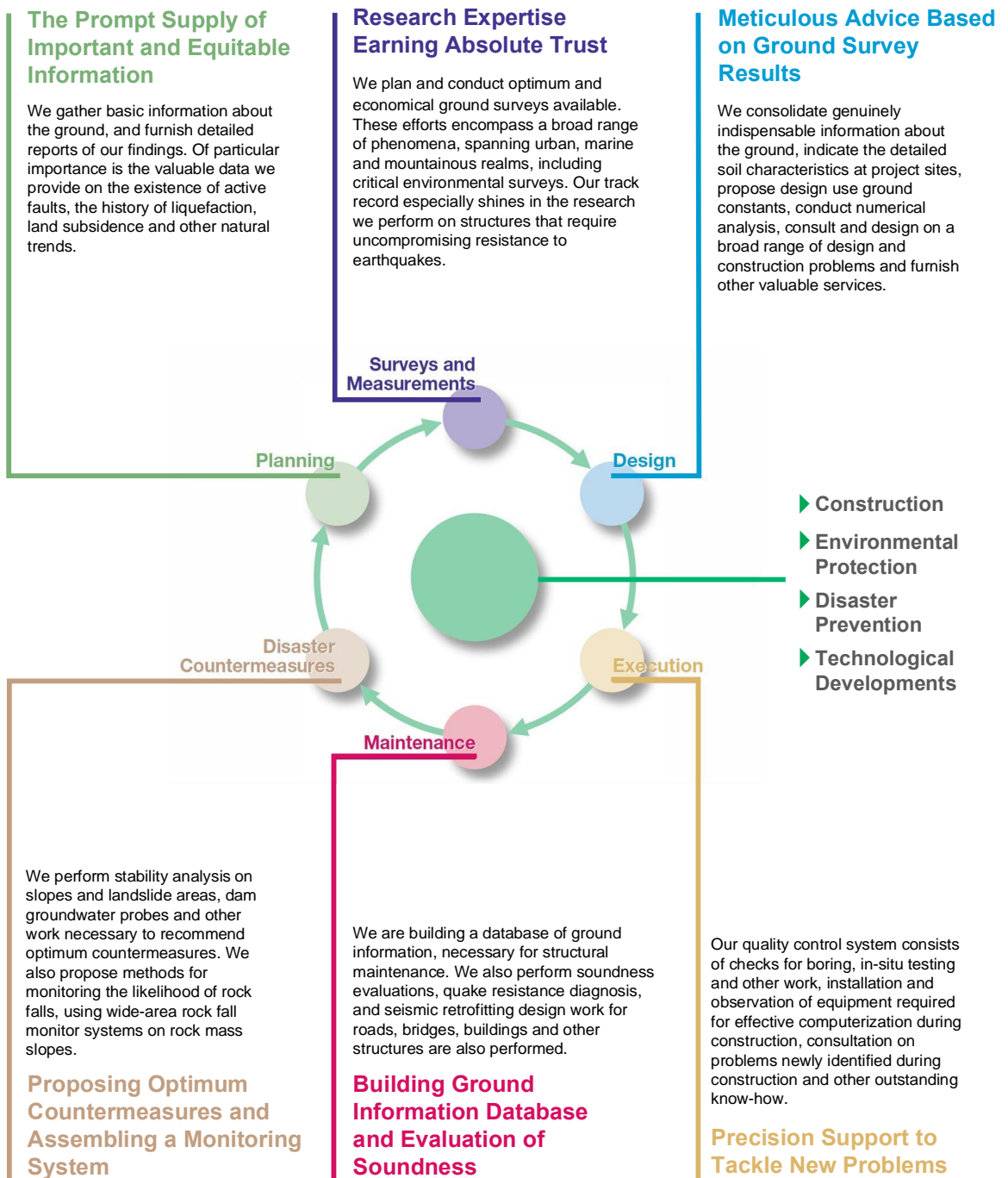
TOKYO SOIL RESEARCH

CORPORATE PROFILE

Dynamic Dialogue, Firmly Rooted in the Earth: The Soil from which Our Dreams Grow.

Tokyo Soil Research Co., Ltd. prides itself on a long history of excellence as a construction consultant focusing on ground surveys - the essential foundation of all fields of construction. This success stems from the diligent devotion to meeting the constantly diversifying needs of our customers, a stance that will continue to guide our endeavors from here on as well. Turning our professional attention to the ground environment field, a critical theme of the 21st century, we supply cutting edge technical services to support the creation of a new earth environment. Acting as a loyal partner and a dependable advisor, Tokyo Soil Research is redoubling the drive to realize the ever-growing dreams of our customers, and in doing so achieve our own towering goals.

→ Our Business Domains



Scope of Business

▶ General Construction



Long-span bridge
(Aichi - pref)

- ▶ Soil Investigation and Geological Survey using Various Types of In-Situ Tests
- ▶ Geological Reconnaissance
- ▶ Geophysical Exploration and Geophysical Logging
- ▶ Ground Water Investigation
- ▶ Hydrological Survey
- ▶ Laboratory Tests to Determine Engineering Properties of Soil and Rock
- ▶ Strength Tests on Rock Mass for Engineering Products
- ▶ Ground Vibration Measurement
- ▶ Monitoring of Deformation During and After Construction
- ▶ Analysis of Stress Deformation
- ▶ Earthquake Response Analysis
- ▶ Soft Ground Analysis
- ▶ Analysis of Groundwater Flow
- ▶ Wide Range of Material Tests

▶ Environmental Protection



Historical Building
(Nara - pref)

- ▶ Investigation of Soil and Ground Water Contamination
- ▶ Investigation of Soil Gas
- ▶ Chemical Analysis of Soil and Groundwater
- ▶ Measurement of Groundwater Flow Direction and Flow Velocity
- ▶ Proposal on Disposal of Contaminated Soil and Groundwater
- ▶ Monitoring of Contaminated Sites During Treatment
- ▶ Examination and Conservation Survey for Ruins, Buried Cultural Properties and Historic Buildings

▶ Disaster Prevention



Earthquake-induced damage
during 1995 Kobe Earthquake

- ▶ Compilation of Geotechnical, Geological and Geophysical Database
- ▶ Investigation and Testing of Structures
- ▶ Evaluation of Seismic Performance of Existing Building
- ▶ Seismic Retrofit Design of Existing Building
- ▶ Creation of Simulated Earthquake Waveform
- ▶ Dynamic Analysis of Ground and Structures
- ▶ Disaster Prevention Design of Slopes

▶ Technology Development



IT-system

- ▶ Sampling of Sand and Gravel by In-Situ Freezing
- ▶ Sampling of Contaminated Soil
- ▶ Microtremor Array Observation for S-Wave Velocity Profiling
- ▶ Pile Integrity Test (IT-system)
- ▶ Measurement of Vertical and Horizontal Permeability using Single Borehole

Global Network

Our business is spreading across national borders.

We will build a global network through technical collaboration and support with overseas companies, actively cooperate with and support companies in the same way in Japan, and aim for growth as a company.





▶ Major overseas businesses

China, Taiwan, Korea, Philippines, Indonesia, Thailand, Iran, Iraq, Saudi Arabia, Yemen, Turkey, United States, Mexico, Peru, Chile, Ecuador, Sweden and Netherlands

▶ Main technical collaboration

- ◇ Upon establishment of the Peruvian earthquake disaster prevention center in Japan, we implemented technology transfer, such as introduction of testing machines, survey, testing and analysis through JICA.
- ◇ We regularly provide technical training to engineers visiting Japan from abroad.
- ◇ In the survey of earthquake disasters, they will come to the scene as members of academic societies, universities, associations, etc., and report the results at academic conferences etc in Japan and abroad.
- ◇ I participated in the preservation investigation committee of Machu Picchu ruins of Peru and cooperated with preservation plan.
- ◇ We are collaborating with IFCO of the Netherlands to develop measurement technology. In addition, we will conduct measurement work overseas jointly.

Company Outline

Company Name	TOKYO SOIL RESEARCH CO., LTD.
Founded	April 7, 1966
Capital	Authorized ¥165,000,000-
President	Tetsuo Tabei
Head Office	2-11-16, Higashigaoka, Meguro-ku, Tokyo 152-0021 Japan
Registration	(1) Civil Engineering Consultant (No.411) (2) Geotechnical Consultant (No.2422) (3) Survey (No.4163) (4) Architectural office (No.13538 for Tokyo metro) (No.5775 for Kanagawa Pref) (No.20187 for Osaka Pref) (5) Compensation Consultant for building (No.2919) (6) Measuring Engineer (Acoustic pressure No.670) (Vibration No.1190) (7) Registered Contractor Authorized by the Minister of Construction (No.247) (8) Designated Investigation Institution for Soil Pollution Measurement (No.2003-8-1032 for Ministry of Environmental)
ISO Certification	ISO 9001 : 2015 Attestation December 1999
	 
Qualified Engineers	Doctor 2 Professional Engineer 56 RCCM (Registered Civil Engineering Consulting Manager) 27 1st Class Registered Architect 14 Registered Soils Investigation Engineer 84 Registered Measuring Engineer for Environment 1 Land Surveyor 17 1st Class Operation and Management Engineer 48
Number of Employee	231
Address	Tokyo Main Office : 3-6-16, Aoba-Dai, Meguro-Ku, Tokyo 153-0042, JAPAN Phone +81-03-3463-2281 Fax. +81-03-3463-2286 Structure Survey and Design Division : 2-11-16, Higashigaoka, Meguro-Ku, Tokyo 152-0021, JAPAN Phone +81-03-5779-7670 Fax. +81-03-5779-7680 Laboratory of Soils and Foundations : 2-11-16, Higashigaoka, Meguro-Ku, Tokyo 152-0021, JAPAN Phone +81-03-3410-7221 Fax. +81-03-3418-0127 Tsukuba General Laboratory : 2-1-12, Umesono, Tsukuba-city, Ibaraki-Prefecture 305-0045, JAPAN Phone +81-029-851-9501 Fax. +81-029-851-9559
Branch Office	Sapporo (Sapporo, Hokkaido Pref.), Tohoku (Sendai, Miyagi Pref.) Kitakanto (Saitama, Saitama Pref.), Kawaguchi (Kawaguchi, Saitama Pref.) Chiba (Chiba, Chiba Pref.), Niigata (Niigata, Niigata Pref.) Yokohama (Yokohama, Kanagawa Pref.), Kawasaki (Kawasaki, Kanagawa Pref.) Nagoya (Nagoya, Aichi Pref.), Kanazawa (Kanazawa, Ishikawa Pref.) Kansai (Suita, Osaka Pref.), Shiga (O-tu, Shiga Pref.), Kobe (Kobe, Hyogo Pref.) Hiroshima (Hiroshima, Hiroshima Pref.), Okayama (Okayama, Okayama Pref.) Kyusyu (Fukuoka, Fukuoka Pref.), Kagoshima (Kagoshima, Kagoshima Pref.) Okinawa (Urasoe, Okinawa Pref.)